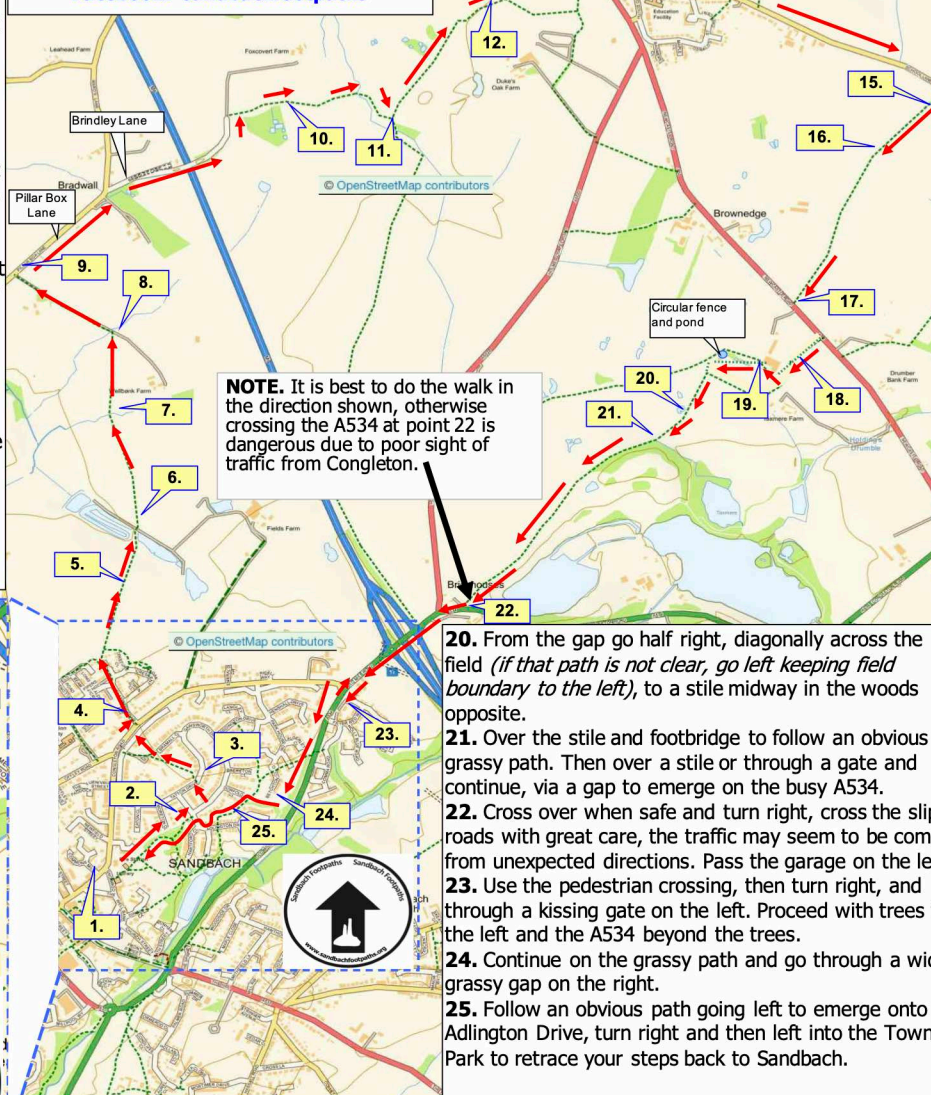


1. From the Military Arms, cross the road to the starkly modern black and white striped Library building, and to the left of that enter the Town Park.
2. Keep left around the park, to find an exit into a housing estate and go left. At a T-junction, go right onto Tatton Drive.
3. After about 50m go left on a wide path and follow this to emerge via a gap onto Congleton Road. Cross when safe and turn right, then left into Claymore Road.
4. Keep going on the left side of Claymore Road, ignoring roads to either side and about 250m from Congleton Road, go through a kissing gate to follow a field path, with the hedge on the left.
5. After about 200m, at the next boundary in the field corner, go through a kissing gate and continue in the same direction straight across the next field to the opposite boundary hedge. At the hedge go through a gate into the fishery, to cross a causeway between ponds, to the next gate in the hedge.
6. Through that gate into the next field and take a line slightly left of the previous direction across the field to the opposite boundary and go through a gate. Follow the field boundary on your left.
7. At the end of that field go over a wooden footbridge with two gates into the next field. After the bridge, go very slightly right, heading to the left of an electricity pole beyond a wooden horse jump near the middle of the field, then go on to a line of oak trees. Pass to the left of another wooden horse jump amongst the trees and continue in the same direction through a gate in the diagonally opposite field corner.
8. After the gate, go left to follow a track. After about 250m, passing the entrance to Bradwall Manor Farm on the left, the track becomes metalled. Continue to the road, and turn right.

Brereton & Taxmere
7 miles, 10 stiles, about 4 hrs
[website: sandbachfootpaths.org](http://www.sandbachfootpaths.org)
[email: sandbachfootpathgroup@gmail.com](mailto:sandbachfootpathgroup@gmail.com)
[Facebook: sandbachfootpaths](https://www.facebook.com/sandbachfootpaths)



NOTE. It is best to do the walk in the direction shown, otherwise crossing the A534 at point 22 is dangerous due to poor sight of traffic from Congleton.

SANDBACH FOOTPATH GROUP

9. This is Pillar Box Lane, and after a couple of isolated houses, at a left bend in the lane take Brindley Lane to the right, with Reading Room Cottage on the left. Go up and over the M6, then down and after a left hand bend, go right over or round a stile to follow the signed footpath / track.

10. Soon woods are to the right and at the end of the woods go over or round a stile to stay on the grassy track. The path zig-zags passing a redundant stile, then go over a footbridge and stile on the left. Soon after, bear right, keeping the boundary, line of trees, to the right.

11. Then over a stile and footbridge, turn immediately left (ignoring obvious path to the right) and follow the field boundary on the left.

12. At the end go over a stile to enter a field and bear slightly right across the field to a redundant stile next to a tree, then continue in the same direction to head for the black and white Bear's Head. *Some boundaries have been removed in this field, so if that path is not clear, go left after the redundant stile and follow the field boundary to the left.* Then go over a stile, and carefully cross the A50 to the Bear's Head (built 1615 by WBM).

13. Stop here for refreshments, or if you have your own provisions keep going past Smithy Cottage on the left to a memorial seat, or there are picnic tables in the little park.

14. From Brereton, follow School Lane, the pavement peters out, but keep on to an isolated house on the left, with a road left and at that point turn right into a field.

15. Head slightly left across the field to the left hand corner (if that path is not clear, go left and keeping the field boundary to the left) to reach the stile and footbridge, about 50m to the left of an electric pole.

16. Over the stile and footbridge and continue straight in the next field, aiming for an electric pole and cross under the wires, with a hedge to the right for a short distance. Then, at a stile, cross to the other side of the hedge and continue in the same direction, the hedge now to the left. Proceed over the next stile to emerge at the busy A50.

17. Turn left, cross when safe and after about 50m turn right over a stile and continue with a boundary to the left and a horse arena to the right.

18. At the end of the field go over a footbridge with two stiles, then follow a narrow path with conifers to the left and a fence to the right. At the fence corner, go sharp right, still with a fence to the right.

19. At the end of the fence, bear slightly left and go to the left of a circular fence and pond ahead. Then go through a kissing gate in the field corner. Ignore a stile ahead to the right, but go diagonally across the field to the opposite left hand corner and through a gap (there is a redundant overgrown stile nearby).

20. From the gap go half right, diagonally across the field (if that path is not clear, go left keeping field boundary to the left), to a stile midway in the woods opposite.

21. Over the stile and footbridge to follow an obvious grassy path. Then over a stile or through a gate and continue, via a gap to emerge on the busy A534.

22. Cross over when safe and turn right, cross the slip roads with great care, the traffic may seem to be coming from unexpected directions. Pass the garage on the left.

23. Use the pedestrian crossing, then turn right, and through a kissing gate on the left. Proceed with trees to the left and the A534 beyond the trees.

24. Continue on the grassy path and go through a wide grassy gap on the right.

25. Follow an obvious path going left to emerge onto Adlington Drive, turn right and then left into the Town Park to retrace your steps back to Sandbach.



The Dog Walking Code - For safe and happy walking with dogs:

Ensure your dog is under effective control, by using a short lead around sheep and other livestock. Give cattle a wide berth, but if they become agitated you may have to release your dog for your own safety; never run, keep calm and don't shout.

Keep your dog with you on rough land where there could be nesting birds, such as the beautiful lapwing, 1st March to 31st July, and don't let it stray into crops including fields of grass, fruit and vegetables. Always bag and bin your dog's poo wherever you are. You can use any public waste bin or your bin at home.